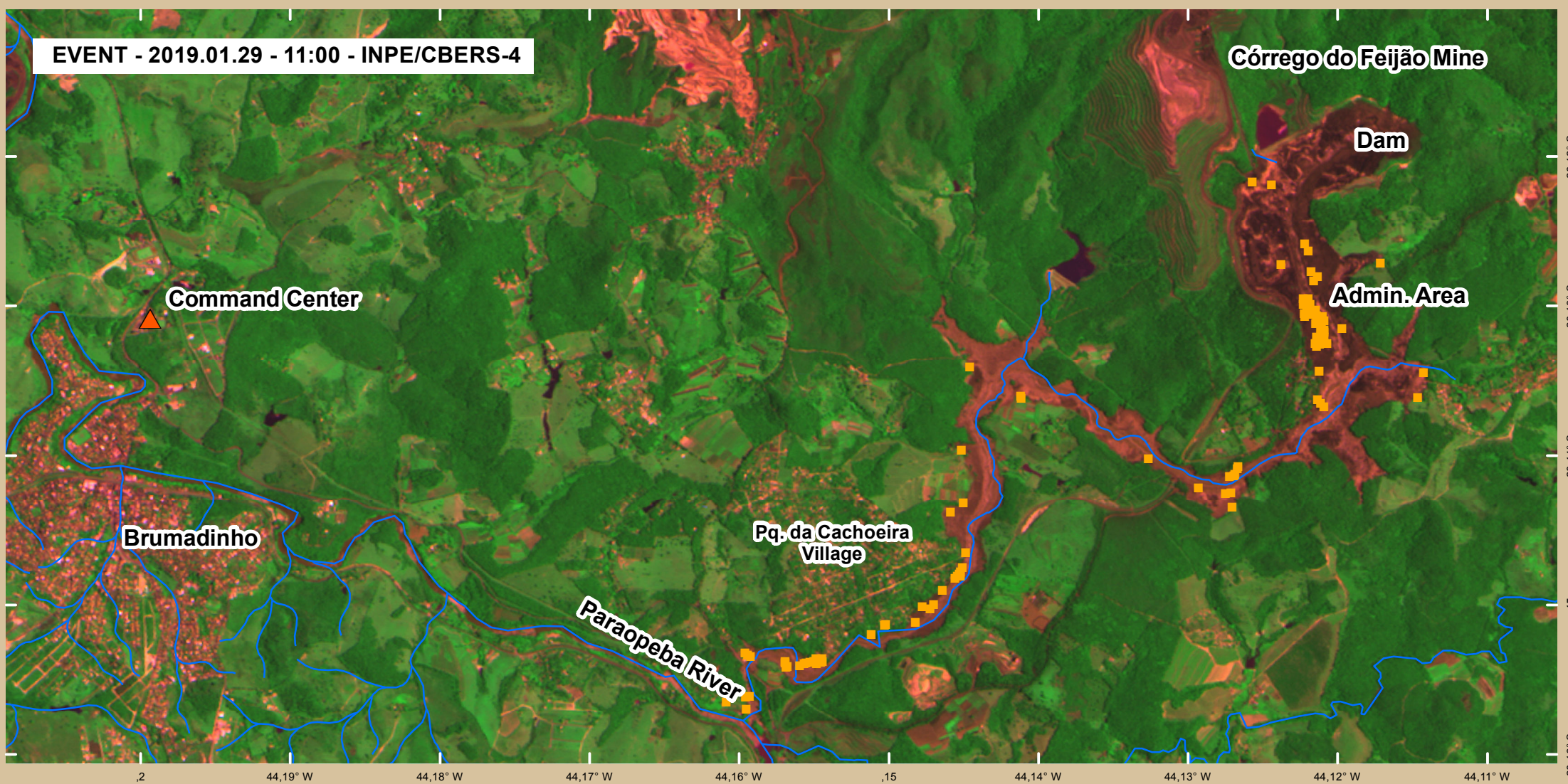
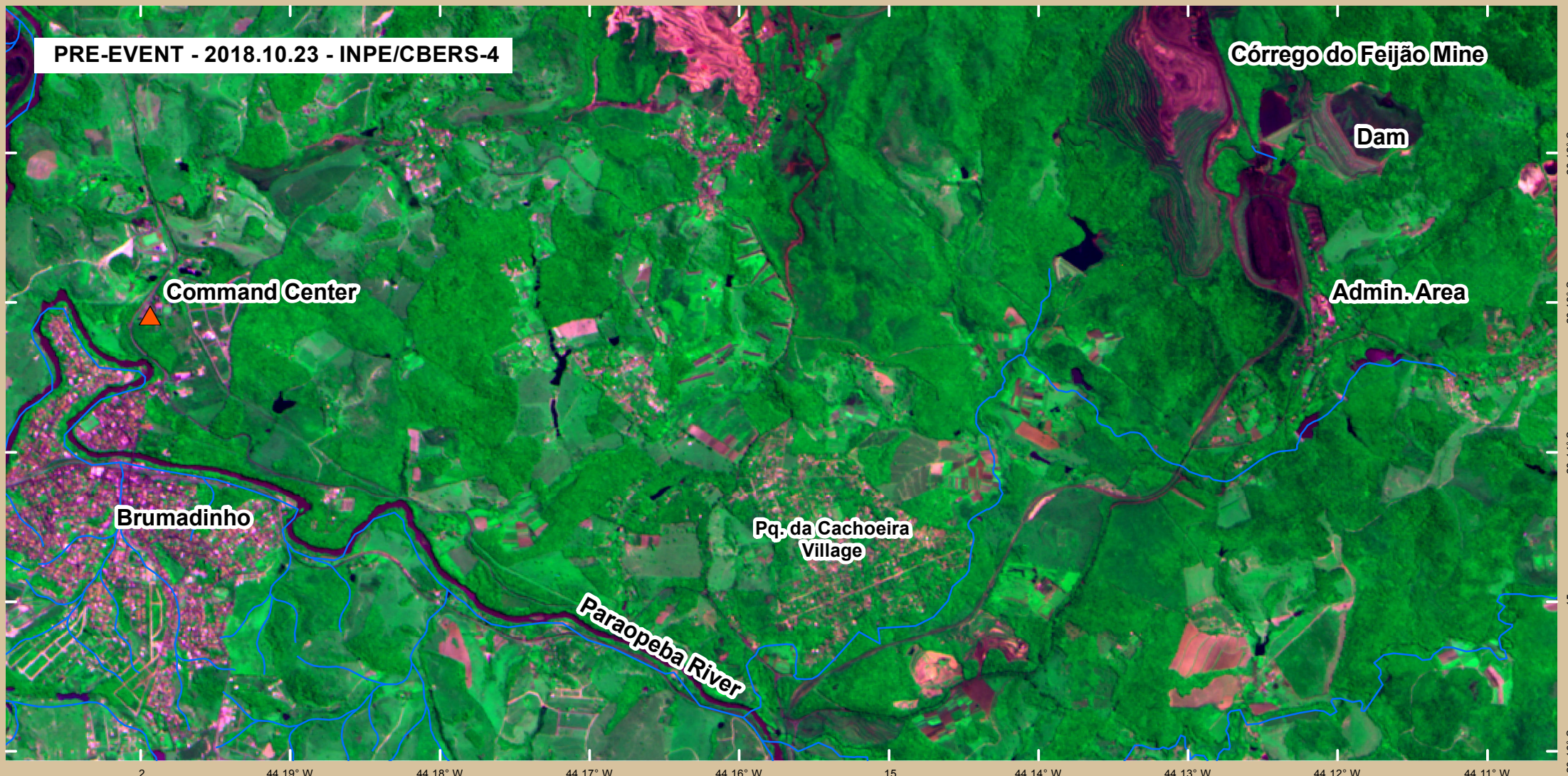




Dam Collapse in Brumadinho/MG - Brazil

Before and after the disaster

Charter Call 686



1.000 Meters



Data Sources

Pre Event and Event:
INPE / CBERS-4
Instrument: panMUX
Acquired on 2019.01.29 - 11:00
Resolution: 5m

Land Features:
OpenStreetMap

Legend

- Command Center
- Buildings
- Rivers

Disclaimer: Product generated by CENAD (National Center of Risk and Disaster Management – Brazil), through the agreement International Charter “Space and Major Disasters”, Call ID 686, with images provided by INPE / CBERS-4. This product was generated using digital techniques and requires field verification. There is no precision mapping in this product.