

WorldView-2 image, destroyed and damaged buildings after earthquakes, [08/02/2023]



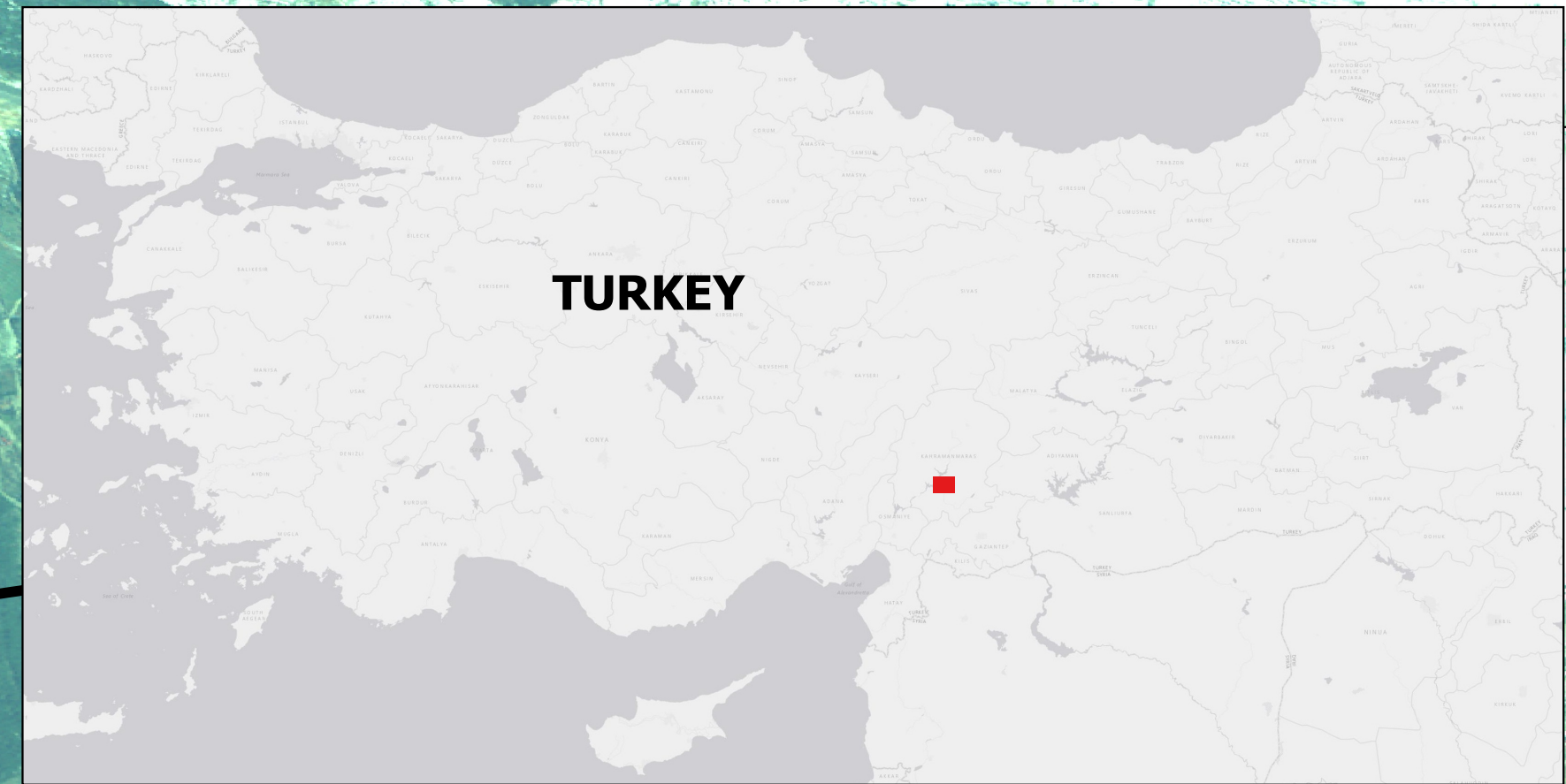
Maxar Technologies image, situation before earthquakes

Satellite: WORLDVIEW-2  
Imagery date: 08 February 2023, 09:02 UTC  
Resolution: 2.6 m  
★ destroyed, damaged and possibly damaged buildings  
⊘ temporary camps  
Coordinate system: WGS 1984 UTM Zone 37N  
© (C) COPYRIGHT 2008 DigitalGlobe, Inc., Longmont CO USA 80503.  
DigitalGlobe and the DigitalGlobe logos are trademarks of DigitalGlobe, Inc.  
The use and/or dissemination of this data and/or of any product in any way derived there from are restricted. Unauthorized use and/or dissemination is prohibited.  
Pre-event image: Image © Maxar Technologies  
Map produced by UE "Geoinformation systems"

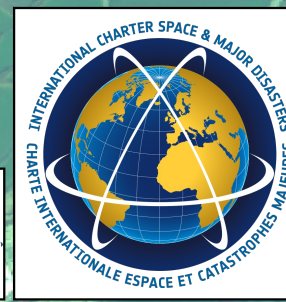
**BUILDINGS POTENTIALLY DESTROYED AND DAMAGED**  
**96**

**TEMPORARY CAMPS**  
**5**

**Activation-797 (Call-919) - Earthquakes in TURKEY, Kahramanmaraş, AOI ID: 23**  
**As observed by WORLDVIEW-2 image on 08 February 2023**



**Call-919 AoI ID: 23**



**Map scale for A1: 1: 15 000**  
0 1 KM